

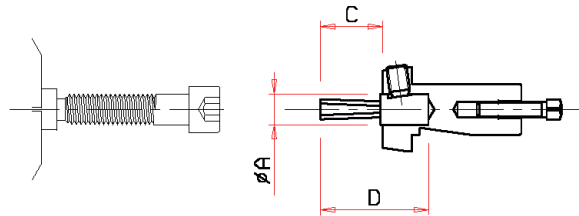


# BROACHING ATTACHMENT

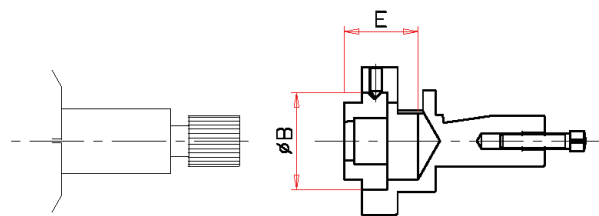
Attachment for multispindle automatics used for broaching internal and external polygons, provided that they can be reached frontally.

Tool rotation is synchronous with the rotating piece, while the feeding is provided by a cam.

Different angular orientations of the broach with respect to the machined piece are possible.



Internal broach holder



External broach holder

Grandezza	ØA	ØB	C	D	E
Gr.0	12	38	24.5	42	17
Gr.1	12	38	24.5	42	17
Gr.3	16	38	35	65	17