

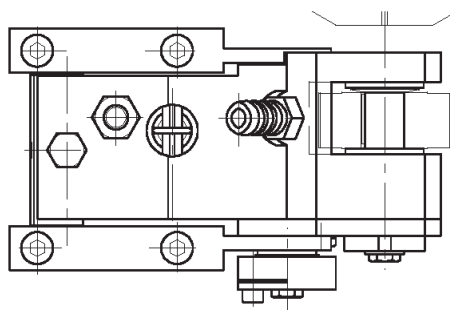
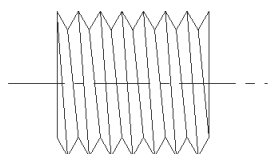
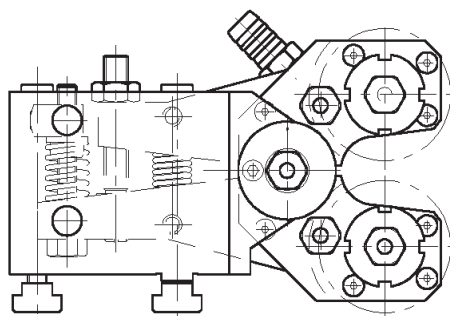
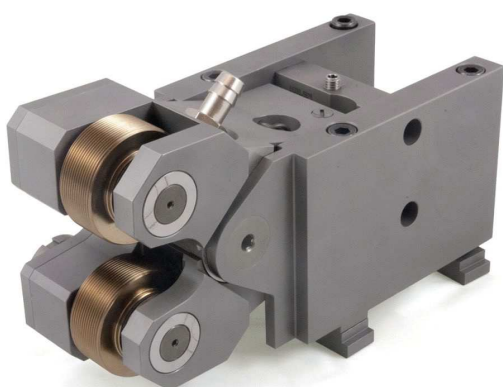


## ROLLING ATTACHMENT FOR THREAD

Attachment for multispindle automatics fitted on the cross slides; it is used to thread by rolling.

During the working stroke the rolls act tangentially on piece. The plastic deformation of the materials, obtained by compression, improves the endurance and the surface finishing.

The rolling speed is the same of the main spindle.



Size	Min thread		Max thread	
	metrico	gas	metrico	gas
Gr.1	M 4 x 0.7	R 1/8"	M 22 x 2	R 1/2"
Gr.3	M 6	R 1/8"	M 30 x 2	R 7/8"
Gr.4	M 10	R 1/8"	M 36 x 2	R 1"